

Product Features

Fast, full-featured L/I/V test operation

Easy-to-use Test Wizard for complete test creation

Production-ready "load and run" configuration with security

Built-in Microsoft Access® database for test and data storage

ILX Lightwave sets new standards in flexibility and ease of use with our laser diode parametric analysis software, the SPA-9000. When coupled with the LPA-9080B Laser Diode Parameter Analyzer, this powerful Windows-based software provides detailed test configurations that fully evaluate laser diode performance during development and qualification testing. In production, pre-configured test schemes can be executed using a simple "load test and RUN" operation, with test access limited via multi-level password security.

All tests and measured data are stored in Microsoft Access® database format, allowing for easy export into other analysis programs or enterprise systems. In addition, the software can also use data files from ILX's previous DOS and LabVIEW applications, simplifying the upgrade process from legacy test systems. Measurements can be configured for display to meet your exact needs, and printed results can be customized for final test reports, including your company logo and address information.

SPA 9000

Laser Diode
Parametric
Analysis
Software

NEW!
Wavelength
Measurement
Capability



The New Standard in Flexible Laser Diode Parametric Analysis Software

 **ILX Lightwave**
Photonic Test & Measurement Instrumentation

SPA 9000

Laser Diode
Parametric
Analysis
Software

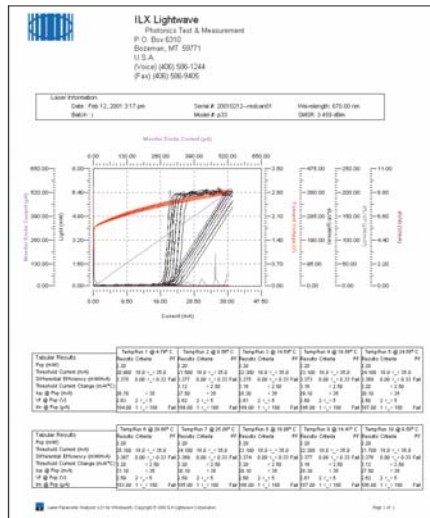
Product Overview

Test Flexibility

All parametric tests are created and edited through a Windows® Wizard, with its familiar “Back, Next, and Cancel” functions. Sophisticated test plans can be created quickly and conveniently stored for later re-use or editing. These same tests can also be used easily in production, with security controlled access, under a simple “Load Test and Run” operation sequence. Full L/I/V characterization is possible, along with a number of other Telcordia® recommended performance tests. For comprehensive testing of temperature-dependent parameters, up to 6 temperature set-points can be defined and repeated under a single test plan.

Test Plan Security

The software environment features three levels of security - user-level, basic or none. Under user-level a system administrator or test manager can define different levels of access and permission for various users of the system, all password controlled. This prevents unauthorized modifications to established test plans, and limits production access to only the production mode of operation. The basic level of security prevents inadvertent modification to stored tests as well as preventing unauthorized use of the system. During design and development, security can be left off, allowing maximum flexibility and access to the system.



Sample of printed output

ILX Lightwave
Photonic Test & Measurement Instrumentation
P.O. Box 6310, Bozeman, MT 59711 • FAX: 406-586-9405
www.ilxlightwave.com

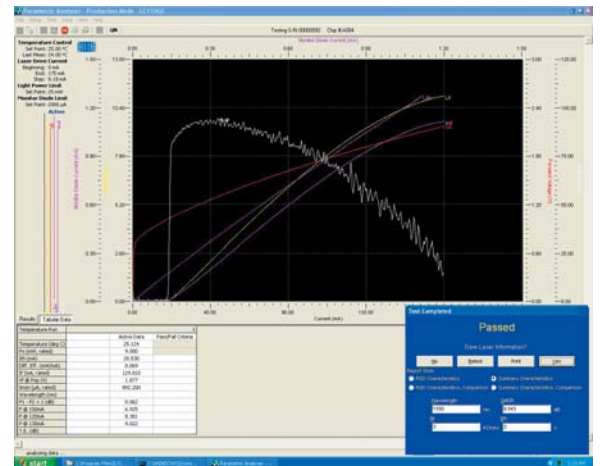
Test Results

Upon completion of a test run, all measured parameters are stored in the built-in Microsoft Access® database in user-specified format. The test results can be configured for real-time output display and for printed test reporting.

Final test reports can be customized to include company logo and contact information, as well as test result formatting. Additionally, the stored test data can be recalled for later evaluation and review, or for conducting more detailed study such as kink-free power analysis.

Manual Control Screen

The SPA-9000 also offers a password-protected, manual control screen, allowing you to operate the LPA-9080 Analyzer as a single-channel laser diode controller with built in power meter. This mode offers flexibility during the device development stage, and also provides a convenient means of trouble-shooting initial test set-ups.



Sample of completed test results

SPA-9000 SERIES SOFTWARE REQUIREMENTS

Computer Type: 266 MHz Pentium®-class machine, minimum
Memory: 128 MB or greater, depending on Windows® operating system
Hard Disk Drive: Minimum of 40 MB free space
Video: SVGA 800 x 600 minimum
Disc Drive: CD Rom drive (for software installation)
Printer: Any Windows® system printer
Interface: National Instruments® GPIB interface card and drive software
Operating System: Windows® 2000 Professional, or Windows® XP Professional

ORDERING INFORMATION

SPA-9000 Laser Diode Parametric Analysis Software

In keeping with our continuing improvement, ILX Lightwave reserves the right to change specifications without notice and without liability for such changes.

光貿易株式会社
hikari, inc.
〒113-0034
東京都文京区湯島 3-13-8 湯島不二ビル 301 号
TEL : 03-3832-3117 FAX : 03-3832-3118
e-mail : contact@hikari-trading.com
<http://www.hikari-trading.com/>

