

## JD8714 4Kx2K SDK Series for Spatial Light Modulator (SLM)

The JD8714 Spatial Light Modulator is based on a reflective LCOS microdisplay with an ultra-high resolution of 4096 x 2400 pixels. With the pixel size (3.74 $\mu$ m), the highest potential applications of the JD8714 Spatial Light Modulator are Holography Display, Wavelength Selective Switch (WSS), Holography Data Storage (HDS), Adaptive Optics, etc. By the way, the JD8714 support standard HDMI 1.4 interface.

### Main Features

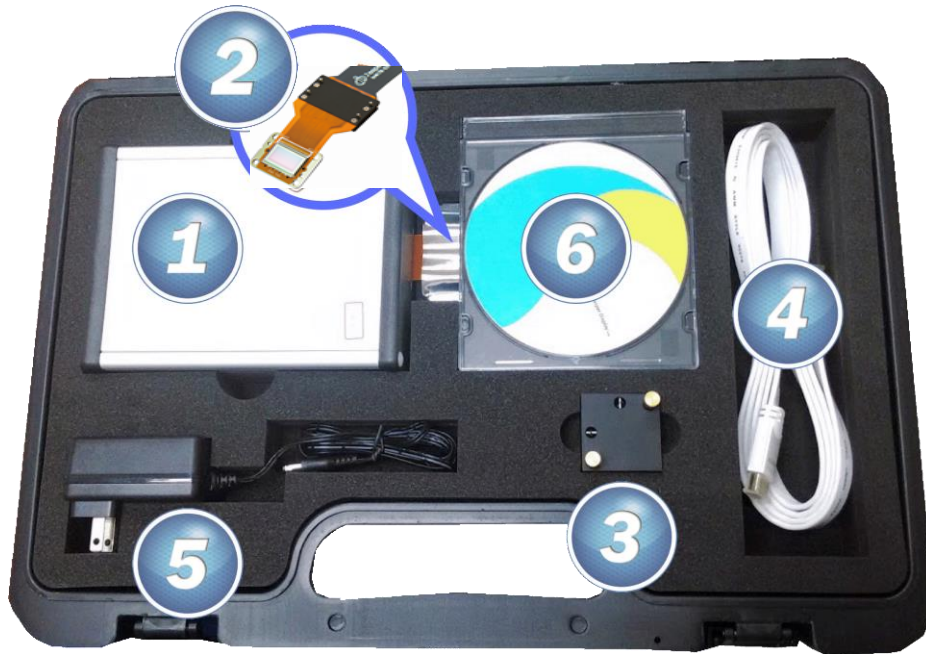
- Major phase Type
- Input: 3840x2160@30Hz
- Retardation (at 633nm) :  $\geq 2\pi$
- Response Time < 50ms
- HDMI 1.4



### Specifications

Display Type	Reflective LCOS	
Resolution	4096x2400	3840x2160
Input Signal Speed	24Hz	30Hz
Active Area	15.3mm x 8.98mm	
Pixel Pitch	3.74 $\mu$ m	
Fill Factor (Aperture Ratio)	$\geq 89\%$	
Waveband	445nm~800nm & 405nm~532nm	
Numbers of Input Level	8-bit	
Active Area Diagonal	0.7"	
Retardation	$\geq 2\pi$ @ 633 nm	
Response Time	<50ms at typical operating temperature (2 $\pi$ )	
Input Signal I/F	HDMI 1.4	
Power Supply	AC INPUT : 100-240V 50-60Hz DC OUT : +12V/2A	

## In-Box Materials



Content List		
No	Item	Q'ty
1	<b>Driving System</b> (aluminum case)	1
2	<b>JD5704 Microdisplay Module</b> (Connect to the Driving System)	1
-	<b>Extender Flex Cable</b> (Connect between the driving system and the microdisplay)	1
3	<b>Panel Holder</b>	1
4	<b>HDMI Cable</b>	1
5	<b>DC 12V/2A Power Adaptor</b>	1
6	<b>Software &amp; Content Disc</b> (incl. Warranty Card)	1
-	<b>Mini USB Cable</b>	1
-	<b>Neoconix Mounting</b>	2
-	<b>Neoconix Connector</b>	4
-	<b>Neoconix Cover</b>	4